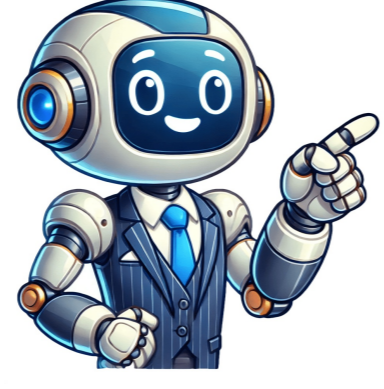


I'm not a bot































The JCPenney Employee Kiosk is a digital resource created to simplify employee management tasks for JCPenney associates. Accessible online, this tool allows employees to access essential job-related information, including schedules, pay details, and benefits. It is a secure and user-friendly platform that plays a significant role in enhancing productivity and streamlining processes. Accessing the kiosk is straightforward and designed to cater to both active and former employees. To get started, employees need to visit the JCPenney Associates website. From there, they can log in using their employee ID and password. For added convenience, JCPenney offers a "Kiosk @ Home" feature. This allows employees to manage their accounts remotely, ensuring they can access the kiosk from any location with an internet connection. You Might Also Like: Way To Remove Twitter Whats Happening Feed: A Step-by-Step Guide The kiosk simplifies schedule management, allowing employees to view upcoming shifts, request time off, and even swap shifts with colleagues. This feature enhances flexibility and helps employees plan their personal lives effectively. Associates can review and download their pay stubs through the portal. This feature provides transparency and helps employees track earnings, deductions, and tax details, especially during tax season. The platform offers tools to enroll in health insurance, retirement savings plans, and other employee benefits. Employees can also update their beneficiaries and adjust coverage levels directly through the portal. Changing contact details, such as phone numbers and addresses, is quick and straightforward. This ensures that the company's records are always up-to-date, facilitating seamless communication. The kiosk keeps employees informed with updates, policy changes, and company announcements, fostering a transparent and collaborative work environment. Associates can access training materials, company policies, and other critical documents. This centralization of resources saves time and makes it easier for employees to stay informed about workplace expectations. One of the primary features of the JCPenney Employee Kiosk is the ability to manage work schedules. Employees can log in to view their assigned shifts, helping them plan their personal and professional lives better. Schedule updates are made in real-time, ensuring accuracy and reducing misunderstandings about work hours. For associates looking to adjust their schedules, the kiosk provides tools for submitting shift-change requests or notifying supervisors about availability. The kiosk also serves as a gateway to payroll information. Employees can log in to view their pay stubs, track earnings, and review deductions. This transparency ensures employees can stay on top of their financial details without the need to visit HR in person. Another essential payroll feature is the ability to download W-2 forms. During tax season, employees can easily access these forms to prepare their tax returns, saving time and effort. JCPenney offers a robust benefits package to its employees, and the kiosk is the central platform for managing these benefits. Employees can explore details about health insurance, dental coverage, retirement savings plans, and more. Using the kiosk, associates can make updates to their coverage, enroll in new benefits, or review current plans. This ensures employees have complete control over their benefits and can make informed decisions based on their needs. You Might Also Like: Invest Shopnifty: Your Gateway to Micro-Investing and Financial Growth Keeping personal information up-to-date is critical for smooth communication between employees and the company. Through the kiosk, employees can update their contact information, including home address, email, and phone number. This feature is especially important for ensuring timely notifications about schedule changes, benefits updates, or company-wide announcements. Employees can request time off directly through the JCPenney Employee Kiosk. Whether it's for vacation, sick leave, or personal reasons, the platform simplifies the process. Associates can view their available paid time off (PTO) balance and submit requests in just a few clicks. Supervisors can review and approve these requests digitally, making the entire process efficient for everyone involved. The kiosk also provides information about JCPenney's Employee Assistance Programs (EAPs). These programs offer support for personal and professional challenges, such as mental health counseling, financial advice, and work-life balance resources. By making these resources easily accessible through the kiosk, JCPenney ensures its employees have the tools they need to succeed both at work and in their personal lives. Occasionally, employees may face issues while accessing the kiosk. Common problems include forgotten passwords or trouble navigating the platform. To address these issues, JCPenney provides robust technical support options. The kiosk itself features a password reset tool, allowing employees to regain access quickly. For more complex issues, associates can contact the support team through the website or by calling the dedicated hotline. The JCPenney Employee Kiosk is not just for current employees. Former associates can also use the platform to access critical information, such as past pay stubs or W-2 forms. JCPenney provides a separate portal for former employees, ensuring they can access the information they need even after leaving the company. This feature is particularly valuable for those managing tax filings or employment-related matters (EAPs). A common question is whether you can access the kiosk from multiple locations. The answer is yes, as long as you have an internet connection. Whether it's checking schedules, requesting time off, reviewing payroll information, employees can handle these tasks without needing to visit their workplace. This flexibility is especially beneficial for associates with busy schedules or those working from multiple locations. The JCPenney Employee Kiosk is an indispensable tool for employees. It eliminates the need for manual paperwork and streamlines processes that were once time-consuming. By centralizing critical functions like payroll management, schedule tracking, and benefits enrollment, the kiosk empowers employees to take control of their work life. This user-friendly platform not only saves time but also improves transparency and communication, making it an essential resource for JCPenney's workforce. You Might Also Like: Joyous Laughter Crossword Clue: Decoding Mirth and Its Significance The JCPenney Employee Kiosk is a powerful tool that enhances the overall employee experience. By providing a centralized platform for managing schedules, payroll, benefits, and personal information, the kiosk empowers associates to stay organized and informed. The inclusion of the "Kiosk @ Home" feature and support for former employees further underscores its convenience and accessibility. With its user-friendly interface and robust functionality, the JCPenney Employee Kiosk is an indispensable resource for both active and former employees. The JCPenney Employee Kiosk is an online platform designed for JCPenney associates to manage their work-related tasks. It provides access to schedules, payroll details, benefits, and more. To log in, visit the JCPenney Associates website and enter your employee ID and password. If you're using the "Kiosk @ Home" feature, ensure you have a secure internet connection. Yes, former employees can access the kiosk through a dedicated portal to view past pay stubs, W-2 forms, and other essential information. The kiosk includes a password reset tool to help you regain access. Alternatively, you can contact JCPenney's technical support team for assistance. The kiosk offers tools for managing schedules, accessing payroll information, and updating personal details. You can also view your upcoming shifts, request time off, and even swap shifts with colleagues. Log in to the kiosk by navigating to the time-off request section, and submit your request. You can also view your available PTO balance before making a request. If you encounter technical issues, you can use the kiosk's support features or contact the JCPenney technical support team through their website or hotline. Yes, employees and former associates can access and download their W-2 forms directly from the JCPenney Employee Kiosk, especially during tax season. By centralizing essential tasks such as schedule management, payroll access, and benefits updates, the kiosk reduces the need for manual processes, saving time and improving efficiency. Discover fresh updates and trending news on Horizon THANK YOU! Share — copy and redistribute the material in any medium or format for any purpose, even commercially. Adapt — remix, transform, and build upon the material for any purpose, even commercially. The licensor cannot revoke these freedoms as long as you follow the license terms. Attribution — You must give appropriate credit — provide a link to the license, and indicate if changes were made. — You may do so in any reasonable manner, but not in any way that suggests the licensor endorses you or your use. ShareAlike — If you remix, transform, or build upon the material, you must distribute your contributions under the same license as the original. No additional restrictions — You may not apply legal terms or technological measures that legally restrict others from doing anything the license permits. You do not have to comply with the license for elements of the material in the public domain or where your use is permitted by an applicable exception or limitation. No warranties are given. The license may not give you all of the permissions necessary for your intended use. For example, other rights such as publicity, privacy, or moral rights may limit how you use the material. A powerful tool designed to streamline and enhance the work life of JCPenney employees. The JCPenney Associate Kiosk is an online portal designed for JCPenney employees, also known as associates. It provides a centralized platform to access vital work-related information. This digital hub is your go-to resource for staying informed, managing schedules, and ensuring you make the most out of your employment at JCPenney. Source: Pinterest Certainly! Accessing the JCPenney Associate Kiosk is a straightforward process designed to provide employees convenient access to essential work-related information. Here's a more detailed guide on how to access the JCPenney Associate Kiosk: Make sure you have a reliable internet connection. The Associate Kiosk is an online portal; a reliable internet connection is essential for seamless access. You can use a desktop computer, laptop, tablet, or smartphone to access the JCPenney Associate Kiosk. The portal is optimized for various devices, making it accessible virtually anywhere. Open your preferred web browser. The JCPenney Associate Kiosk is compatible with popular browsers such as Google Chrome, Mozilla Firefox, Safari, and Microsoft Edge. Ensure your browser is current to optimize your experience. Type the official URL of the JCPenney employee portal into the address bar of your web browser. Your employer or HR department may provide the specific URL. Typically, it might look like " " or a similar address. On the homepage of the JCPenney Associate Kiosk, you will find a login section. Provide your login details, including your username and password. You may need to register first to obtain your login details if you are a new employee. JCPenney takes the security of employee information seriously. You may encounter security measures such as captcha verification or multi-factor authentication to protect your account. Once logged in, you will be directed to the dashboard of the JCPenney Associate Kiosk. You will find various tabs or sections providing access to your work-related information, including work schedules, payroll details, benefits, and more. Take some time to explore the features of the Associate Kiosk. Familiarize yourself with the layout and functionalities available. You may find tabs for work schedules, payroll, benefits, and more. You can also view your upcoming shifts, request time off, and even swap shifts with colleagues. If you need to update your information, such as your contact details or preferences, you can do so through the kiosk. Changes made by JCPenney, so it's always a good idea to refer to any official communication from the company or contact your HR department if you encounter any issues during the login process. The JCPenney Associate Kiosk is a robust platform designed to cater to the diverse needs of its employees, offering a range of features that enhance efficiency, transparency, and overall work satisfaction. Let's delve deeper into the important features that make the JCPenney Kiosk an indispensable tool for associates: The Work Schedule Management feature gives associates a real-time view of their work schedules. It details upcoming shifts, allowing for better planning and ensuring associates are always in sync with their work commitments. Benefits: Enables associates to plan personal activities around work commitments. Reduces scheduling conflicts by providing timely information. Associates can access their pay stubs and detailed payroll information through the Associate Kiosk. This feature provides a transparent earnings breakdown, including salary or hourly wages, taxes, and deductions. Benefits: Enhances financial transparency for associates. Facilitates easy tracking of earnings and deductions. The Benefits Hub consolidates all information related to employee benefits, including health insurance, retirement plans, and other perks offered by JCPenney. Associates can explore, understand, and manage their benefits efficiently. Benefits: Centralizes information, making it easily accessible. Empower associates to make informed decisions about their benefits. The Employee Discounts feature notifies associates of exclusive discounts, promotions, or special offers. For in-store purchases or external partnerships, associates can use unique savings opportunities. Benefits: Boosts morale by offering additional perks to associates. Fosters a sense of appreciation and value among employees. The HR Information Hub is a dedicated section providing access to human resources-related documents, policies, and updates. Associates can stay informed about company policies, updates, and organizational changes. Benefits: Keeps associates updated on crucial HR information. Facilitates compliance with company policies and guidelines. The communication channel within the Associate Kiosk ensures that associates are well-informed about company announcements, news, and updates. This feature strengthens the connection between the company and its employees. Benefits: Enhances internal communication and transparency. Creates a sense of community among associates. Overview: The JCPenney Associate Kiosk is designed with mobile accessibility in mind, allowing associates to access important information from their mobile devices. This flexibility ensures that associates can manage work-related tasks on the go. Benefits: Provides flexibility and convenience for associates. Enables access to crucial information without being tied to a desktop. Source: ityuq247 Welcome to the world of JCPenney Associates Kiosk! Registering for the Kiosk is a breeze, and we're here to guide you through the process step by step. Head to the official JCPenney employee portal to start the registration process. You can do this from any device with internet access — your computer, tablet, or smartphone. Look for the registration section once you're on the JCPenney employee portal. This is where you'll start creating your account to access the Associate's Kiosk. You'll need to enter your employee information to proceed with the registration. This includes your employee ID, name, and other necessary identification information. Make sure to double-check the accuracy of the details you provide. It's time to establish your login credentials. Choose a username and a secure password. Remember to create a password that is easy for you to remember but challenging for others to guess. This will be your key to unlocking the benefits of the Associates Kiosk. To ensure the security of your account, you may be required to verify your identity. This could involve answering security questions or using a verification code sent to your email or phone. Proceed by following the instructions displayed on your screen to complete this step. Once you've entered all the necessary information and verified your identity, it's time to confirm your registration. Review the details you provided; if everything looks good, proceed to prove. Congratulations — you're now registered for the JCPenney Associates' Kiosk! With your registration confirmed, log in using the username and password you created. Once logged in, you'll have access to a wealth of information, from your work schedule and payroll details to benefits and exclusive discounts. Explore the features and make the most out of your JCPenney work experience. If you want to find your JCPenney Employee ID, don't worry — it's a straightforward process. Your Employee ID is a unique identifier that helps you access various resources, including the JCPenney Associate Kiosk. Here's a simple guide to locate your Employee ID: Your Employee ID is often included on your paycheck or pay stub. Look at the document, and you should find a series of numbers — your Employee ID — usually near your name or personal information. Another quick way to find your Employee ID is through the JCPenney Associate Kiosk. Log in to the kiosk using your credentials, and once you're in, navigate to your profile or personal information section. You'll likely find your Employee ID displayed prominently. If you need help locating your Employee ID on your paycheck or through the kiosk, feel free to contact your Human Resources department or supervisor. They are there to assist you and can provide you with the information you need. Check your JCPenney ID badge if you have one. Your Employee ID might be printed on the badge for easy reference. It's handy to have your ID with you, especially if you need it while at work. Sometimes, your Employee ID may be included in official email correspondence from JCPenney. Search your work emails for any communication from the company, and you might find your Employee ID mentioned. Source: jcpennysassociateskiosk Are you curious about your upcoming work schedule at JCPenney? No worries — the process is simple. Here's a step-by-step guide to help you check your work schedule using the JCPenney Associate Kiosk. Start by visiting the official JCPenney employee portal. You can do this from any device with internet access — whether it's your computer at home or your smartphone on the go. Log in using your credentials once you're on the JCPenney Associate Kiosk page. This typically involves entering your employee ID and password. If you still need to set up your login details, do so through the provided registration process. After logging in, look for the "Work Schedule" section or something similar. This is where you'll find all the details about your upcoming shifts. Click on the "Work Schedule" section to see a calendar or list displaying your upcoming work shifts. The schedule usually includes information about your shifts' date, time, and location. Explore additional features that might be available in the "Work Schedule" section. Some platforms allow you to set preferences, request time off, or swap shifts directly through the Associate Kiosk. Once you've checked your work schedule and any additional information, logging out of the Associate Kiosk is a good practice for security reasons. Look for a "Log Out" or "Sign Out" option, and click on it to end your session. Some Associate Kiosk platforms provide features for shift swapping. Check for "Swap Shifts" options in the "Work Schedule" section. Absolutely! The Associate Kiosk allows you to check your work schedule from the comfort of your home or anywhere with internet access. Stay on top of your shifts effortlessly. Yes, the Associate Kiosk informs you about special discounts and promotions available exclusively to JCPenney associates. Enjoy savings on both work and personal purchases. Payroll information is typically updated regularly. You can access your pay stubs and stay informed about your earnings consistently. The Associate Kiosk provides access to HR-related information, including company policies, updates, and other documents relevant to your employment at JCPenney. In conclusion, the JCPenney Associate Kiosk is more than just a portal; whether you're checking your schedule or managing your finances, the Associate Kiosk is your one-stop-shop for all things work-related. Unlock the power within and make the most of your journey at JCPenney. Read more: Want to give your brand videos a cinematic edge? Join our visual experts and specialists for an info-packed hour of insights to elevate your next project. Tune in on June 24 at 11am ET. Register Now!How can financial brands set themselves apart through visual storytelling? Our experts explain how. Learn More!The Motorsport Images Collections captures events from 1895 to today's most recent coverage. Discover The Collection!Want to give your brand videos a cinematic edge? Join our visual experts and specialists for an info-packed hour of insights to elevate your next video project. Tune in on June 24 at 11am ET. Register Now!How can financial brands set themselves apart through visual storytelling? Our experts explain how. Learn More!The Motorsport Images Collections captures events from 1895 to today's most recent coverage. Discover The Collection Now! Associates always look for efficient tools that help them streamline their workflows. This is where the JCP Kiosk comes in! This top-quality platform is designed for JCPenney associates. Its valuable features help them simplify their tasks, improve communication, and make the work experience impressive. What are JCPenney Kiosk and its key features? Today's guide is created for you. Let's explore its major functionalities and how it helps associates make task management simpler and easier. This guide is for you, whether you are an experienced JCP associate or just starting out. The JCP Kiosk is a user-friendly online platform designed to cater to the needs of the company's employees. It is a one-stop destination for managing all important information related to employees. Gone are the days of relying on physical copies to get essential information. JCPenney Kiosk provides you with easy access to your pay stubs. How cool it is! You can view and download pay stubs with a couple of clicks. This platform ensures efficiency in the payment process. This efficient platform does not only let associates manage their busy work schedules, update their personal information, and request time off, but it offers several other features as well. For example, you can view your pay stubs and tax information. This way, you can keep track of your earnings in a better way and stay on top of all your financial responsibilities. In addition, you can access several training resources and materials to develop your skills. You will receive crucial updates from here. In this way, you can stay informed about the company's news, updates, and policies. Employees can access and check their work schedules on the JCP Kiosk. This feature is incredibly helpful for JCPenney employees, as it lets them manage their personal activities around their assigned shifts. The interface of this platform is clean and clear, making it easier for you to view upcoming shifts. Employees can plan their schedule smartly with this platform, whether attending marriage events, hanging out with friends, or scheduling doctor's appointments. This way, you can manage your work and personal lives effectively. Therefore, work schedule viewing is a superb feature for employees to plan their personal activities. JCPenney Kiosk provides access to payroll information, such as tax documents and paystubs. In addition to financial details, employees can use this platform to review their benefit plans. This feature is very useful during the open enrollment period. It lets employees make wise decisions. However, if necessary, they can make adjustments to grab impressive benefits. Its appealing interface ensures a smooth experience. Plus, it makes it simpler to handle important aspects of their employment. JCP Kiosk serves as a central hub for associates to keep themselves informed of multiple aspects of the company. This platform ensures that employees are always updated with the company's announcements and news. You do not need to look at your company's boards to read new policies. Not at all! Every single thing is in your hands. You can access the company's updates and policies through this platform. How amazing it is! Moreover, employees receive announcements through this platform. You will be notified instantly, whether it is an upcoming event or a new product launch. Simply put, this platform ensures employees are well-informed about the company's policies and announcements. The JCP Kiosk offers top-quality training materials and resources to its employees. In this way, they can enhance their skills and grow them professionally. They can access this platform from anywhere at any time. Associates can log in to the JCPenney kiosk and benefit from its features whenever they want, whether they are at home or office. The training material offers numerous topics. Employees can find topics relevant to their specific roles in the company. JCP Kiosk empowers employees to boost their skills through training and development resources. Employees can connect with managers efficiently, thanks to this platform. JCP Kiosk enables associates to ask questions and share their feedback. They can share their valuable ideas with management directly using this platform. So they no longer need to arrange face-to-face meetings and waste time. This type of interaction is great. Most importantly, they can voice their concerns whenever they want. As a result, they will have the information they need to perform their duties. In simple words, JCP Kiosk provides proper communication channels to management and its employees. These are the benefits of joining JCP Kiosk. JCP Kiosk has transformed how employees manage their personal information and busy schedules. With this platform, they are now able to balance their work and lives. It allows employees to have complete autonomy over their busy schedules. Over the past few years, they have had to rely on HR professionals to make changes to their work schedules. This process took a lot of time. Now, with JCP Kiosk, they can easily access and update their work schedules. In this way, they can manage their work-life balance. This platform allows you to access vital information and manage busy schedules conveniently. You do not have to see notice boards to see notifications and other news regarding your company. This platform lets you view all important updates on your mobile phone. You can access them wherever you go, whether you are on vacation, on a business trip, or at home. Simply log into it and access all the necessary data. It streamlines complicated processes. It makes them more manageable and minimizes the chances of errors. JCPenney Kiosk can handle a lot of tasks, including payroll management and benefits administration. It delivers accuracy in all aspects of employee management. In general, payroll management can be a time-consuming task. Moreover, it is prone to errors because it involves data entry and multiple calculations. However, JCP Kiosk streamlines these processes by automating tasks for you. It has enhanced communication between employees and management. It acts as a central platform to access crucial data and submit employees' queries. Through this platform, they can view recent updates on the company's policies. JCP Kiosk ensures various tasks and check scheduling and accessing payroll information, reducing the need for manual intervention and paperwork. The platform enhances communication between associates and the management team, fostering a transparent and collaborative work environment. Employees can easily plan their activities and commitments with access to their work schedules. Associates can conveniently find essential company policies, training resources, and other important information on the platform. Your JCPenney Employee ID is a unique identifier that allows you to access various company resources, including the JCP Kiosk. To find your employee ID, follow these steps: 1. Check Your Paystub: Your employee ID is typically mentioned on your paystub. Look for a series of numbers or an alphanumeric code on the paystub, and that should be your employee ID. 2. Ask Your Supervisor or HR Department: If you cannot find your employee ID on your paystub or have any doubts, contact your supervisor or the HR department. They will be able to provide you with the correct information. 3. Use the JCP Kiosk Registration Confirmation: You might have received a confirmation email when you registered for the JCPAssociates. Your employee ID could be mentioned in that email. Checking your work schedule on the JCP Kiosk is a simple process. Here's how you can do it: 1. Log in to the JCP associate kiosk: Visit the JCP Kiosk portal and log in using your username and password. 2. Access Work Schedule: Once logged in, look for the option to view your work schedule. It is usually found on the homepage or under the "My Schedule" section. 3. Select Date Range: You may have the option to view your schedule for a specific date or a range of dates. Choose the appropriate option. 4. Review Your Schedule: The system will display your scheduled shifts and their dates and times. Take note of your upcoming shifts for proper planning. 5. Sync with Calendar (Optional): Some platforms allow you to sync your work schedule with your calendar app, making it easier to manage your schedule. 6. Notify Management: If you need to request a change in your schedule, you can contact your supervisor or HR department. They will be able to provide you with the necessary information. 7. Logout: Once you are done viewing your schedule, log out of the JCP Kiosk. To ensure security, you may need to answer security questions or provide additional information to verify your identity. 4. Reset Password: Once your identity is verified, you can reset your password. Choose a new, strong password for your account. 5. Login with a New Password: Use the new password to log in to the JCP Kiosk account. Users may encounter login issues while using the JCPenney Associate Kiosk, despite its user-friendly design. Here are some common issues and how to troubleshoot them: Double-check that you have entered your username and password correctly. Passwords are case-sensitive, so ensure that the caps lock is off. If you forget your username or employee ID, follow the "Forgot Password" process to retrieve your login credentials. Multiple failed login attempts can result in an account lockout. Wait a few minutes or contact the HR department to unlock your account. Ensure you use a compatible web browser updated to the latest version. Try clearing your browser cache and cookies before attempting to log in again. A stable internet connection is necessary to access the JCP Kiosk. Check your internet connection and try accessing the platform again. The JCP Kiosk is a comprehensive and efficient platform that fosters a seamless connection between associates and the company. By offering a range of features such as work schedule viewing, payroll and benefits access, company policy dissemination, training resources, and communication channels, the JCPenney Associate Kiosk empowers associates to manage their work-related information conveniently. Its user-friendly interface promotes a transparent and collaborative work environment, while its flexibility enhances work-life balance for employees. The Kiosk's significance extends beyond a mere tool. It has become a bridge that fills the gap between associates and the management team, enriching the professional journey for each individual. With its commitment to simplifying tasks, enhancing communication, and providing accessible information, the company's JCP Kiosk empowers employees to boost their skills through training and development resources. Employees can connect with managers efficiently, thanks to this platform. JCP Kiosk enables associates to ask questions and share their feedback. They can share their valuable ideas with management directly using this platform. So they no longer need to arrange face-to-face meetings and waste time. This type of interaction is great. Most importantly, they can voice their concerns whenever they want. As a result, they will have the information they need to perform their duties. In simple words, JCP Kiosk provides proper communication channels to management and its employees. These are the benefits of joining JCP Kiosk. JCP Kiosk has transformed how employees manage their personal information and busy schedules. With this platform, they are now able to balance their work and lives. It allows employees to have complete autonomy over their busy schedules. Over the past few years, they have had to rely on HR professionals to make changes to their work schedules. This process took a lot of time. Now, with JCP Kiosk, they can easily access and update their work schedules. In this way, they can manage their work-life balance. This platform allows you to access vital information and manage busy schedules conveniently. You do not have to see notice boards to see notifications and other news regarding your company. This platform lets you view all important updates on your mobile phone. You can access them wherever you go, whether you are on vacation, on a business trip, or at home. Simply log into it and access all the necessary data. It streamlines complicated processes. It makes them more manageable and minimizes the chances of errors. JCPenney Kiosk can handle a lot of tasks, including payroll management and benefits administration. It delivers accuracy in all aspects of employee management. In general, payroll management can be a time-consuming task. Moreover, it is prone to errors because it involves data entry and multiple calculations. However, JCP Kiosk streamlines these processes by automating tasks for you. It has enhanced communication between employees and management. It acts as a central platform to access crucial data and submit employees' queries. Through this platform, they can view recent updates on the company's policies. JCP Kiosk ensures various tasks and check scheduling and accessing payroll information, reducing the need for manual intervention and paperwork. The platform enhances communication between associates and the management team, fostering a transparent and collaborative work environment. Employees can easily plan their activities and commitments with access to their work schedules. Associates can conveniently find essential company policies, training resources, and other important information on the platform. Your JCPenney Employee ID is a unique identifier that allows you to access various company resources, including the JCP Kiosk. To find your employee ID, follow these steps: 1. Check Your Paystub: Your employee ID is typically mentioned on your paystub. Look for a series of numbers or an alphanumeric code on the paystub, and that should be your employee ID. 2. Ask Your Supervisor or HR Department: If you cannot find your employee ID on your paystub or have any doubts, contact your supervisor or the HR department. They will be able to provide you with the correct information. 3. Use the JCP Kiosk Registration Confirmation: You might have received a confirmation email when you registered for the JCPAssociates. Your employee ID could be mentioned in that email. Checking your work schedule on the JCP Kiosk is a simple process. Here's how you can do it: 1. Log in to the JCP associate kiosk: Visit the JCP Kiosk portal and log in using your username and password. 2. Access Work Schedule: Once logged in, look for the option to view your work schedule. It is usually found on the homepage or under the "My Schedule" section. 3. Select Date Range: You may have the option to view your schedule for a specific date or a range of dates. Choose the appropriate option. 4. Review Your Schedule: The system will display your scheduled shifts and their dates and times. Take note of your upcoming shifts for proper planning. 5. Sync with Calendar (Optional): Some platforms allow you to sync your work schedule with your calendar app, making it easier to manage your schedule. 6. Notify Management: If you need to request a change in your schedule, you can contact your supervisor or HR department. They will be able to provide you with the necessary information. 7. Logout: Once you are done viewing your schedule, log out of the JCP Kiosk. To ensure security, you may need to answer security questions or provide additional information to verify your identity. 4. Reset Password: Once your identity is verified, you can reset your password. Choose a new, strong password for your account. 5. Login with a New Password: Use the new password to log in to the JCP Kiosk account. Users may encounter login issues while using the JCPenney Associate Kiosk, despite its user-friendly design. Here are some common issues and how to troubleshoot them: Double-check that you have entered your username and password correctly. Passwords are case-sensitive, so ensure that the caps lock is off. If you forget your username or employee ID, follow the "Forgot Password" process to retrieve your login credentials. Multiple failed login attempts can result in an account lockout. Wait a few minutes or contact the HR department to unlock your account. Ensure you use a compatible web browser updated to the latest version. Try clearing your browser cache and cookies before attempting to log in again. A stable internet connection is necessary to access the JCP Kiosk. Check your internet connection and try accessing the platform again. The JCP Kiosk is a comprehensive and efficient platform that fosters a seamless connection between associates and the company. By offering a range of features such as work schedule viewing, payroll and benefits access, company policy dissemination, training resources, and communication channels, the JCPenney Associate Kiosk empowers associates to manage their work-related information conveniently. Its user-friendly interface promotes a transparent and collaborative work environment, while its flexibility enhances work-life balance for employees. The Kiosk's significance extends beyond a mere tool. It has become a bridge that fills the gap between associates and the management team, enriching the professional journey for each individual. With its commitment to simplifying tasks, enhancing communication, and providing accessible information, the company's JCP Kiosk empowers employees to boost their skills through training and development resources. Employees can connect with managers efficiently, thanks to this platform. JCP Kiosk enables associates to ask questions and share their feedback. They can share their valuable ideas with management directly using this platform. So they no longer need to arrange face-to-face meetings and waste time. This type of interaction is great. Most importantly, they can voice their concerns whenever they want. As a result, they will have the information they need to perform their duties. In simple words, JCP Kiosk provides proper communication channels to management and its employees. These are the benefits of joining JCP Kiosk. JCP Kiosk has transformed how employees manage their personal information and busy schedules. With this platform, they are now able to balance their work and lives. It allows employees to have complete autonomy over their busy schedules. Over the past few years, they have had to rely on HR professionals to make changes to their work schedules. This process took a lot of time. Now, with JCP Kiosk, they can easily access and update their work schedules. In this way, they can manage their work-life balance. This platform allows you to access vital information and manage busy schedules conveniently. You do not have to see notice boards to see notifications and other news regarding your company. This platform lets you view all important updates on your mobile phone. You can access them wherever you go, whether you are on vacation, on a business trip, or at home. Simply log into it and access all the necessary data. It streamlines complicated processes. It makes them more manageable and minimizes the chances of errors. JCPenney Kiosk can handle a lot of tasks, including payroll management and benefits administration. It delivers accuracy in all aspects of employee management. In general, payroll management can be a time-consuming task. Moreover, it is prone to errors because it involves data entry and multiple calculations. However, JCP Kiosk streamlines these processes by automating tasks for you. It has enhanced communication between employees and management. It acts as a central platform to access crucial data and submit employees' queries. Through this platform, they can view recent updates on the company's policies. JCP Kiosk ensures various tasks and check scheduling and accessing payroll information, reducing the need for manual intervention and paperwork. The platform enhances communication between associates and the management team, fostering a transparent and collaborative work environment. Employees can easily plan their activities and commitments with access to their work schedules. Associates can conveniently find essential company policies, training resources, and other important information on the platform. Your JCPenney Employee ID is a unique identifier that allows you to access various company resources, including the JCP Kiosk. To find your employee ID, follow these steps: 1. Check Your Paystub: Your employee ID is typically mentioned on your paystub. Look for a series of numbers or an alphanumeric code on the paystub, and that should be your employee ID. 2. Ask Your Supervisor or HR Department: If you cannot find your employee ID on your paystub or have any doubts, contact your supervisor or the HR department. They will be able to provide you with the correct information. 3. Use the JCP Kiosk Registration Confirmation: You might have received a confirmation email when you registered for the JCPAssociates. Your employee ID could be mentioned in that email. Checking your work schedule on the JCP Kiosk is a simple process. Here's how you can do it: 1. Log in to the JCP associate kiosk: Visit the JCP Kiosk portal and log in using your username and password. 2. Access Work Schedule: Once logged in, look for the option to view your work schedule. It is usually found on the homepage or under the "My Schedule" section. 3. Select Date Range: You may have the option to view your schedule for a specific date or a range of dates. Choose the appropriate option. 4. Review Your Schedule: The system will display your scheduled shifts and their dates and times. Take note of your upcoming shifts for proper planning. 5. Sync with Calendar (Optional): Some platforms allow you to sync your work schedule with your calendar app, making it easier to manage your schedule. 6. Notify Management: If you need to request a change in your schedule, you can contact your supervisor or HR department. They will be able to provide you with the necessary information. 7. Logout: Once you are done viewing your schedule, log out of the JCP Kiosk. To ensure security, you may need to answer security questions or provide additional information to verify your identity. 4. Reset Password: Once your identity is verified, you can reset your password. Choose a new, strong password for your account. 5. Login with a New Password: Use the new password to log in to the JCP Kiosk account. Users may encounter login issues while using the JCPenney Associate Kiosk, despite its user-friendly design. Here are some common issues and how to troubleshoot them: Double-check that you have entered your username and password correctly. Passwords are case-sensitive, so ensure that the caps lock is off. If you forget your username or employee ID, follow the "Forgot Password" process to retrieve your login credentials. Multiple failed login attempts can result in an account lockout. Wait a few minutes or contact the HR department to unlock your account. Ensure you use a compatible web browser updated to the latest version. Try clearing your browser cache and cookies before attempting to log in again. A stable internet connection is necessary to access the JCP Kiosk. Check your internet connection and try accessing the platform again. The JCP Kiosk is a comprehensive and efficient platform that fosters a seamless connection between associates and the company. By offering a range of features such as work schedule viewing, payroll and benefits access, company policy dissemination, training resources, and communication channels, the JCPenney Associate Kiosk empowers associates to manage their work-related information conveniently. Its user-friendly interface promotes a transparent and collaborative work environment, while its flexibility enhances work-life balance for employees. The Kiosk's significance extends beyond a mere tool. It has become a bridge that fills the gap between associates and the management team, enriching the professional journey for each individual. With its commitment to simplifying tasks, enhancing communication, and providing accessible information, the company's JCP Kiosk empowers employees to boost their skills through training and development resources. Employees can connect with managers efficiently, thanks to this platform. JCP Kiosk enables associates to ask questions and share their feedback. They can share their valuable ideas with management directly using this platform. So they no longer need to arrange face-to-face meetings and waste time. This type of interaction is great. Most importantly, they can voice their concerns whenever they want. As a result, they will have the information they need to perform their duties. In simple words, JCP Kiosk provides proper communication channels to management and its employees. These are the benefits of joining JCP Kiosk. JCP Kiosk has transformed how employees manage their personal information and busy schedules. With this platform, they are now able to balance their work and lives. It allows employees to have complete autonomy over their busy schedules. Over the past few years, they have had to rely on HR professionals to make changes to their work schedules. This process took a lot of time. Now, with JCP Kiosk, they can easily access and update their work schedules. In this way, they can manage their work-life balance. This platform allows you to access vital information and manage busy schedules conveniently. You do not have to see notice boards to see notifications and other news regarding your company. This platform lets you view all important updates on your mobile phone. You can access them wherever you go, whether you are on vacation, on a business trip, or at home. Simply log into it and access all the necessary data. It streamlines complicated processes. It makes them more manageable and minimizes the chances of errors. JCPenney Kiosk can handle a lot of tasks, including payroll management and benefits administration. It delivers accuracy in all aspects of employee management. In general, payroll management can be a time-consuming task. Moreover, it is prone to errors because it involves data entry and multiple calculations. However, JCP Kiosk streamlines these processes by automating tasks for you. It has enhanced communication between employees and management. It acts as a central platform to access crucial data and submit employees' queries. Through this platform, they can view recent updates on the company's policies. JCP Kiosk ensures various tasks and check scheduling and accessing payroll information, reducing the need for manual intervention and paperwork. The platform enhances communication between associates and the management team, fostering a transparent and collaborative work environment. Employees can easily plan their activities and commitments with access to their work schedules. Associates can conveniently find essential company policies, training resources, and other important information on the platform. Your JCPenney Employee ID is a unique identifier that allows you to access various company resources, including the JCP Kiosk. To find your employee ID, follow these steps: 1. Check Your Paystub: Your employee ID is typically mentioned on your paystub. Look for a series of numbers or an alphanumeric code on the paystub, and that should be your employee ID. 2. Ask Your Supervisor or HR Department: If you cannot find your employee ID on your paystub or have any doubts, contact your supervisor or the HR department. They will be able to provide you with the correct information. 3. Use the JCP Kiosk Registration Confirmation: You might have received a confirmation email when you registered for the JCPAssociates. Your employee ID could be mentioned in that email. Checking your work schedule on the JCP Kiosk is a simple process. Here's how you can do it: 1. Log in to the JCP associate kiosk: Visit the JCP Kiosk portal and log in using your username and password. 2. Access Work Schedule: Once logged in, look for the option to view your work schedule. It is usually found on the homepage or under the "My Schedule" section. 3. Select Date Range: You may have the option to view your schedule for a specific date or a range of dates. Choose the appropriate option. 4. Review Your Schedule: The system will display your scheduled shifts and their dates and times. Take note of your upcoming shifts for proper planning. 5. Sync with Calendar (Optional): Some platforms allow you to sync your work schedule with your calendar app, making it easier to manage your schedule. 6. Notify Management: If you need to request a change in your schedule, you can contact your supervisor or HR department. They will be able to provide you with the necessary information. 7. Logout: Once you are done viewing your schedule, log out of the JCP Kiosk. To ensure security, you may need to answer security questions or provide additional information to verify your identity. 4. Reset Password: Once your identity is verified, you can reset your password. Choose a new, strong password for your account. 5. Login with a New Password: Use the new password to log in to the JCP Kiosk account. Users may encounter login issues while using the JCPenney Associate Kiosk, despite its user-friendly design. Here are some common issues and how to troubleshoot them: Double-check that you have entered your username and password correctly. Passwords are case-sensitive, so ensure that the caps lock is off. If you forget your username or employee ID, follow the "Forgot Password" process to retrieve your login credentials. Multiple failed login attempts can result in an account lockout. Wait a few minutes or contact the HR department to unlock your account. Ensure you use a compatible web browser updated to the latest version. Try clearing your browser cache and cookies before attempting to log in again. A stable internet connection is necessary to access the JCP Kiosk. Check your internet connection and try accessing the platform again. The JCP Kiosk is a comprehensive and efficient platform that fosters a seamless connection between associates and the company. By offering a range of features such as work schedule viewing, payroll and benefits access, company policy dissemination, training resources, and communication channels, the JCPenney Associate Kiosk empowers associates to manage their work-related information conveniently. Its user-friendly interface promotes a transparent and collaborative work environment, while its flexibility enhances work-life balance for employees. The Kiosk's significance extends beyond a mere tool. It has become a bridge that fills the gap between associates and the management team, enriching the professional journey for each individual. With its commitment to simplifying tasks, enhancing communication, and providing accessible information, the company's JCP Kiosk empowers employees to boost their skills through training and development resources. Employees can connect with managers efficiently, thanks to this platform. JCP Kiosk enables associates to ask questions and share their feedback. They can share their valuable ideas with management directly using this platform. So they no longer need to arrange face-to-face meetings and waste time. This type of interaction is great. Most importantly, they can voice their concerns whenever they want. As a result, they will have the information they need to perform their duties. In simple words, JCP Kiosk provides proper communication channels to management and its employees. These are the benefits of joining JCP Kiosk. JCP Kiosk has transformed how employees manage their personal information and busy schedules. With this platform, they are now able to balance their work and lives. It allows employees to have complete autonomy over their busy schedules. Over the past few years, they have had to rely on HR professionals to make changes to their work schedules. This process took a lot of time. Now, with JCP Kiosk, they can easily access and update their work schedules. In this way, they can manage their work-life balance. This platform allows you to access vital information and manage busy schedules conveniently. You do not have to see notice boards to see notifications and other news regarding your company. This platform lets you view all important updates on your mobile phone. You can access them wherever you go, whether you are on vacation, on a business trip, or at home. Simply log into it and access all the necessary data. It streamlines complicated processes. It makes them more manageable and minimizes the chances of errors. JCPenney Kiosk can handle a lot of tasks, including payroll management and benefits administration. It delivers accuracy in all aspects of employee management. In general, payroll management can be a time-consuming task. Moreover, it is prone to errors because it involves data entry and multiple calculations. However, JCP Kiosk streamlines these processes by automating tasks for you. It has enhanced communication between employees and management. It acts as a central platform to access crucial data and submit employees' queries. Through this platform, they can view recent updates on the company's policies. JCP Kiosk ensures various tasks and check scheduling and accessing payroll information, reducing the need for manual intervention and paperwork. The platform enhances communication between associates and the management team, fostering a transparent and collaborative work environment. Employees can easily plan their activities and commitments with access to their work schedules. Associates can conveniently find essential company policies, training resources, and other important information on the platform. Your JCPenney Employee ID is a unique identifier that allows you to access various company resources, including the JCP Kiosk. To find your employee ID, follow these steps: 1. Check Your Paystub: Your employee ID is typically mentioned on your paystub. Look for a series of numbers or an alphanumeric code on the paystub, and that should be your employee ID. 2. Ask Your Supervisor or HR Department: If you cannot find your employee ID on your paystub or have any doubts, contact your supervisor or the HR department. They will be able to provide you with the correct information. 3. Use the JCP Kiosk Registration Confirmation: You might have received a confirmation email when you registered for the JCPAssociates. Your employee ID could be mentioned in that email. Checking your work schedule on the JCP Kiosk is a simple process. Here's how you can do it: 1. Log in to the JCP associate kiosk: Visit the JCP Kiosk portal and log in using your username and password. 2. Access Work Schedule: Once logged in, look for the option to view your work schedule. It is usually found on the homepage or under the "My Schedule" section. 3. Select Date Range: You may have the option to view your schedule for a specific date or a range of dates. Choose the appropriate option. 4. Review Your Schedule: The system will display your scheduled shifts and their dates and times. Take note of your upcoming shifts for proper planning. 5. Sync with Calendar (Optional): Some platforms allow you to sync your work schedule with your calendar app, making it easier to manage your schedule. 6. Notify Management: If you need to request a change in your schedule, you can contact your supervisor or HR department. They will be able to provide you with the necessary information. 7. Logout: Once you are done viewing your schedule, log out of the JCP Kiosk. To ensure security, you may need to answer security questions or provide additional information to verify your identity. 4. Reset Password: Once your identity is verified, you can reset your password. Choose a new, strong password for your account. 5. Login with a New Password: Use the new password to log in to the JCP Kiosk account. Users may encounter login issues while using the JCPenney Associate Kiosk, despite its user-friendly design. Here are some common issues and how to troubleshoot them: Double-check that you have entered your username and password correctly. Passwords are case-sensitive, so ensure that the caps lock is off. If you forget your username or employee ID, follow the "Forgot Password" process to retrieve your login credentials. Multiple failed login attempts can result in an account lockout. Wait a few minutes or contact the HR department to unlock your account. Ensure you use a compatible web browser updated to the latest version. Try clearing your browser cache and cookies before attempting to log in again. A stable internet connection is necessary to access the JCP Kiosk. Check your internet connection and try accessing the platform again. The JCP Kiosk is a comprehensive and efficient platform that fosters a seamless connection between associates and the company. By offering a range of features such as work schedule viewing, payroll and benefits access, company policy dissemination, training resources, and communication channels, the JCPenney Associate Kiosk empowers associates to manage their work-related information conveniently. Its user-friendly interface promotes a transparent and collaborative work environment, while its flexibility enhances work-life balance for employees. The Kiosk's significance extends beyond a mere tool. It has become a bridge that fills the gap between associates and the management team, enriching the professional journey for each individual. With its commitment to simplifying tasks, enhancing communication, and providing accessible information, the company's JCP Kiosk empowers employees to boost their skills through training and development resources. Employees can connect with managers efficiently, thanks to this platform. JCP Kiosk enables associates to ask questions and share their feedback. They can share their valuable ideas with management directly using this platform. So they no longer need to arrange face-to-face meetings and waste time. This type of interaction is great. Most importantly, they can voice their concerns whenever they want. As a result, they will have the information they need to perform their duties. In simple words, JCP Kiosk provides proper communication channels to management and its employees. These are the benefits of joining JCP Kiosk. JCP Kiosk has transformed how employees manage their personal information and busy schedules. With this platform, they are now able to balance their work and lives. It allows employees to have complete autonomy over their busy schedules. Over the past few years, they have had to rely on HR professionals to make changes to their work schedules. This process took a lot of time. Now, with JCP Kiosk, they can easily access and update their work schedules. In this way, they can manage their work-life balance. This platform allows you to access vital information and manage busy schedules conveniently. You do not have to see notice boards to see notifications and other news regarding your company. This platform lets you view all important updates on your mobile phone. You can access them wherever you go, whether you are on vacation, on a business trip, or at home. Simply log into it and access all the necessary data. It streamlines complicated processes. It makes them more manageable and minimizes the chances of errors. JCPenney Kiosk can handle a lot of tasks, including payroll management and benefits administration. It delivers accuracy in all aspects of employee management. In general, payroll management can be a time-consuming task. Moreover, it is prone to errors because it involves data entry and multiple calculations. However, JCP Kiosk streamlines these processes by automating tasks for you. It has enhanced communication between employees and management. It acts as a central platform to access crucial data and submit employees' queries. Through this platform, they can view recent updates on the company's policies. JCP Kiosk ensures various tasks and check scheduling and accessing payroll information, reducing the need for manual intervention and paperwork. The platform enhances communication between associates and the management team, fostering a transparent and collaborative work environment. Employees can easily plan their activities and commitments with access to their work schedules. Associates can conveniently find essential company policies, training resources, and other important information on the platform. Your JCPenney Employee ID is a unique identifier that allows you to access various company resources, including the JCP Kiosk. To find your employee ID, follow these steps: 1. Check Your Paystub: Your employee ID is typically mentioned on your paystub. Look for a series of numbers or an alphanumeric code on the paystub, and that should be your employee ID. 2. Ask Your Supervisor or HR Department: If you cannot find your employee ID on your paystub or have any doubts, contact your supervisor or the HR department. They will be able to provide you with the correct information. 3. Use the JCP Kiosk Registration Confirmation: You might have received a confirmation email when you registered for the JCPAssociates. Your employee ID could be mentioned in that email. Checking your work schedule on the JCP Kiosk is a simple process. Here's how you can do it: 1. Log in to the JCP associate kiosk: Visit the JCP Kiosk portal and log in using your username and password. 2. Access Work Schedule: Once logged in, look for the option to view your work schedule. It is usually found on the homepage or under the "My Schedule" section. 3. Select Date Range: You may have the option to view your schedule for a specific date or a range of dates. Choose the appropriate option. 4. Review Your Schedule: The system will display your scheduled shifts and their dates and times. Take note of your upcoming shifts for proper planning. 5. Sync

