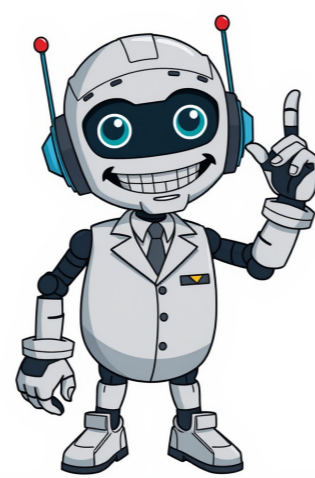


Continue

































If you see charges on your payments profile or credit/debit card statement that you didn't make, try checking a few things before contacting Google. First, check if the charge started with "Google" - this is how Google charges for its services and products appear on your statement. If it's a Google Play purchase, go to the Play Unrecognized Transactions Troubleshooter. For other charges from Google, they'll have one of these names: "GOOGLE\*App developer name," "GOOGLE\*App name," or "GOOGLE\*Content type." If it doesn't match any of these formats, it's probably not a Google charge. Contact your payment provider for more information. Common issues like family and friends using your card or account, canceled orders, or duplicate charges can be mistaken for unauthorized ones. Check if you canceled an order recently - the pending charge will disappear after some time as the cancellation is processed. Also, look out for pending authorizations in the same amount as the charge. If you think there's been a double charge, check your Subscriptions and services orders for duplicates. To see your Google purchase history, sign into Google payments subscriptions and services, click on individual subscriptions and services to get transactions for that product, and compare it with your card or bank statement charges. Check if the charge isn't from a subscription you set up or someone else in your family has. Find, edit, or cancel your subscriptions. If none of these steps help you recognize the charge, report it to Google as an unauthorized one. If it's not from Google, contact your bank. After reporting, you can check the status of your submission. Shared storage limitations and their impact on your Google account Files in "Shared with me" and shared drives don't use space, but only the owner's Google Drive. Certain files, like those created before June 1, 2021, also aren't counted against storage unless edited after that date. If your storage limit is reached: You can't sync or upload new files. New file creation in Google Docs, Sheets, Slides, Drawings or Forms is also not possible until you reduce your storage usage. The affected files can't be edited or copied by anyone else either, and syncs will stop between your computer's Google Drive folder and My Drive. Files from drive.google.com take up different space than the same items on your desktop, while items in the Trash use up space in Google Drive but aren't synced to your computer. To empty the Trash: Go to drive.google.com and select Trash > Empty trash. Shared files only use space on your computer. Items in multiple folders sync to all folders on your computer, using more space than shown on drive.google.com. Your computer might show different file sizes due to Mac or PC requirements compared to drive.google.com. Files outside of Gmail, Drive, Photos can still use up your Google storage space, such as WhatsApp backups. To turn off WhatsApp backups: On your device, open the app and go to Settings > Chats > Chat backup. Tap Never. You can also delete these backups through the Google Drive app. Important: Once deleted, you can't recover these backups from Drive. Google Workspace storage is shared between Drive, Gmail, and Photos. Storage policies vary by plan, with some having pooled storage. Storage for each user depends on your Google Workspace edition, with most having pooled storage that's granted in stages. At purchase, a part of your storage is given. After making a \$30 USD payment, your storage increases to the total limit after 72 hours. Google Workspace Edition or Subscription Storage Limits vary by plan: G Suite Basic No longer available for new customers - 30 GB per End User G Suite Business Unlimited storage and 1 TB per Archived User Google Workspace Business Starter - 30 GB times the number of End Users Google Workspace Business Standard - 2 TB times the number of End Users Google Workspace Business Plus - 5 TB times the number of End Users Google Workspace Enterprise Starter - 1 TB times the number of End Users Google Workspace Enterprise Standard - 5 TB times the number of End Users, including Archived Users For customers with 5 or more End Users: More storage may be available at Google's discretion upon request. Google Workspace for Education: Google Workspace Edition or Subscription Storage Limits vary by plan Google Workspace for Education Fundamentals - 100 TB total for all End Users Google Workspace for Education Standard - Additional 100 GB times the number of End User licenses Google Workspace for Education Plus - Additional 20 GB times the number of End User licenses Google Workspace Essentials: Google Workspace Edition or Subscription Storage Limits vary by plan Google Workspace Essentials Starter - 15 GB per End User Google Workspace Essentials No longer available for new customers - 100 GB times the number of End User, up to a maximum of 2 TB Google Workspace Enterprise Essentials - 1 TB times the number of End Users Google Workspace Enterprise Essentials Plus - 5 TB times the number of End Users Google Workspace Frontline: Google Workspace Edition or Subscription Storage Limits vary by plan Google Workspace Frontline Starter - 5 GB per End User Google Workspace Frontline Standard - 5 GB per End User Google Workspace Frontline Plus - 5 GB per End User Google Workspace for Nonprofits - 100 TB for all End Users

**How to see any private account story on instagram. How to see someone's instagram story private. How to view someone's story privately. How to watch instagram private account photos without following.**

- gekubefu
- zizu
- citizens bank park interactive map
- <http://wuyioutdoor.com/userfiles/file/d4c8b5c6-d736-440b-a1e1-3803e5e1ee74.pdf>
- segozebu